

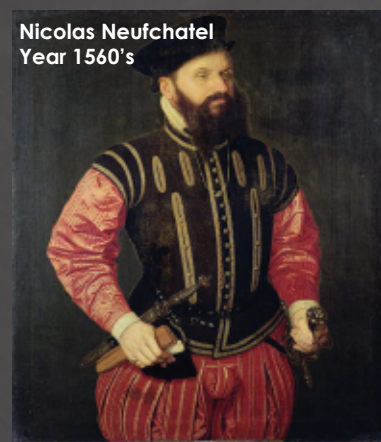
PERIOD PATTERN

Each look was patterned on the half for a series of patterning classes that focus on replicating period looks in ways they could be realistically used onstage.

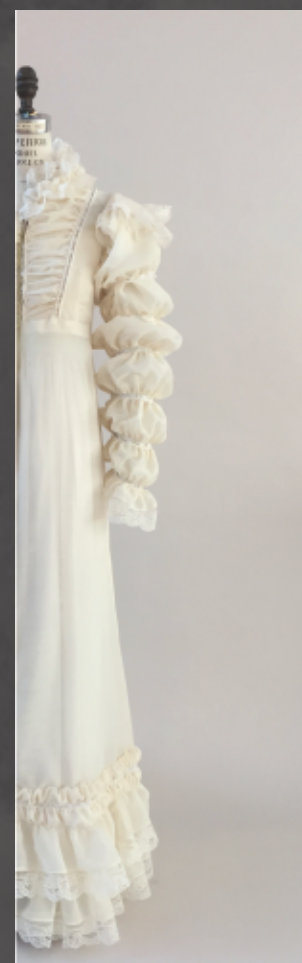
Pre-Victorian

Victorian

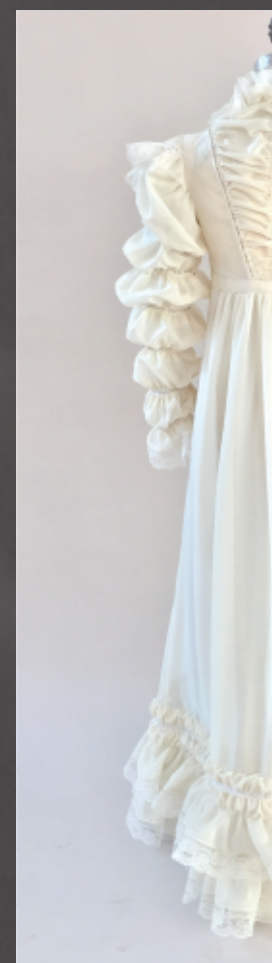
20th Century



Includes a peascod belly and bombasted pumpkin hose. Slashes are faked with bias strips.

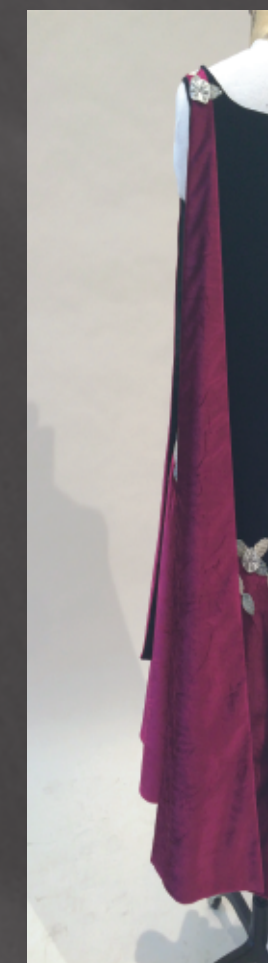


This sheer dress is covered in insertion lace that is corded on both sides and covered in self made ruffles.



Hillwood 48.44.1-2
Year 1920's

Bottom pink wraps up the side front to the shoulder strap. Pink sections are partial circles for full hems.



Dirck Dircksz. van Santvoort, Year 1635

High waisted with slashed sleeves and falling ruff.



Pattern matched plaid is corded in all seams. Upper sleeve is pleated into the armhole so the fullness can be pushed out into the bottom puff. Controlled with undersleeve.



Fashion Plate
Year 1930's

Front of top is a number of pin tucks that terminate just before the sleeve allowing it to flow freely with movement.

